

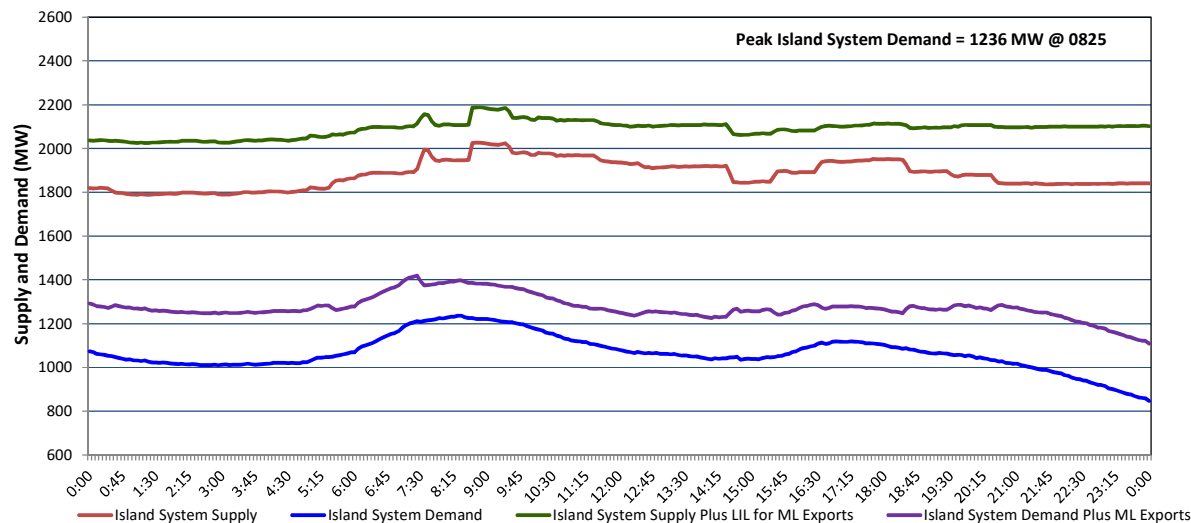
# Newfoundland Labrador Hydro (NLH)

## Supply and Demand Status Report Filed Monday, December 22, 2025

### Section 1

#### Island Interconnected System - Supply, Demand & Exports

#### Actual 24 Hour System Performance For Friday, December 19, 2025



#### Island Supply Notes For December 19, 2025

- A** As of 0800 hours, March 30, 2025, Holyrood Unit 3 unavailable due to planned outage 130 MW (150 MW).
- B** As of 0823 hours, March 31, 2025, Bay d'Espoir Unit 1 unavailable due to planned outage (76.5 MW).
- C** As of 1400 hours, November 04, 2025, St. Anthony Diesel Plant available at 7.7 MW due to forced derating (9.7 MW).
- D** As of 1642 hours, December 17, 2025, Holyrood Unit 1 available at 160 MW due to forced derating (170 MW).
- E** At 0836 hours, December 19, 2025, Bay d'Espoir Unit 2 available (76.5 MW).

### Section 2

#### Island Interconnected System - Supply, Demand & Outlook

Sat, Dec 20, 2025	Island System Outlook <sup>2</sup>	Seven-Day Forecast	Island System Daily Peak Demand (MW)	
			Forecast <sup>8</sup>	Adjusted <sup>6</sup>
Island System Supply: <sup>4</sup>	2,016 MW	Saturday, December 20, 2025	1,150	1,057
NLH Island Generation: <sup>3,7</sup>	1,455 MW	Sunday, December 21, 2025	1,255	1,160
NLH Island Power Purchases: <sup>5</sup>	110 MW	Monday, December 22, 2025	1,285	1,190
NP and CBPP Owned Generation:	190 MW	Tuesday, December 23, 2025	1,455	1,358
LIL/ML Net Imports to Island: <sup>9</sup>	261 MW	Wednesday, December 24, 2025	1,450	1,353
		Thursday, December 25, 2025	1,360	1,264
7-Day Island Peak Demand Forecast:	1,455 MW	Friday, December 26, 2025	1,395	1,299

#### Island Supply Notes For December 20, 2025

- Notes:**
1. Generation outages for running and corrective maintenance are included. These are not unusual for power system operations. They generally do not impact customer supply. Hydro schedules outages to system equipment whenever possible to coincide with periods when customer demands are low and sufficient supply reserves are available. However, from time to time equipment outages are necessary and reserves may be impacted.
  2. As of 0800 Hours.
  3. Gross continuous unit output.
  4. Gross output from all Island sources (including Note 3).
  5. NLH Island Power Purchases include: ML Imports, Exploits Generation, Rattle Brook, Star Lake, Wind Generation and capacity assistance (when applicable).
  6. Adjusted for interruptible load and the impact of voltage reduction when applicable.
  7. Due to limitations inherent in the design of combustion turbines, the output of combustion turbines may be reduced in the event that ambient temperatures exceed the threshold required for full rated output. This threshold is dependent on the design of each turbine.
  8. Does not include ML Exports.
  9. LIL Import sunk in the Island System. Actual LIL flows will be restricted by various system conditions including, but not limited to, Island Load, ML Exports and Avalon Unit status.

### Section 3

#### Island Peak Demand and Exports Information

#### Previous Day Actual Peak and Current Day Forecast Peak

Fri, Dec 19, 2025	Island Peak Demand <sup>10</sup>	8:25	1,236 MW
	Exports at Peak		161 MW
	LIL Net Imports to Island		5,433 MWh
Sat, Dec 20, 2025	Forecast Island Peak Demand		1,150 MW

- Notes:**
10. Island Demand is supplied by NLH generation and purchases, LIL Imports plus generation owned and operated by Newfoundland Power and Corner Brook Pulp & Paper (Deer Lake Power, DLP).